

1. Installation:

Setp 1: Install Java

Java must be installed on your system before you can run the installer.

This can be downloaded from

<https://www.oracle.com/java/technologies/javase/javase8u211-later-archive-downloads.html>.

Users: Install the Java Runtime Environment (JRE).

Developers: Install the Java Development Environment (JDK).

Note: that Java version 1.8.0_231 is required.

Setp 2: Install JavaPOS Libs

Type the following at the terminal to change to you home directory:

```
cd /opt/JavaPOS_ADK_1141_for_Linux_x64
```

Execute the run-install:

```
./run-install.sh
```

Setp 3: Add serial port permission to the current user

```
sudo usermod -aG dialout user
```

Note: " user " is replaced by your user name

2. Setup:

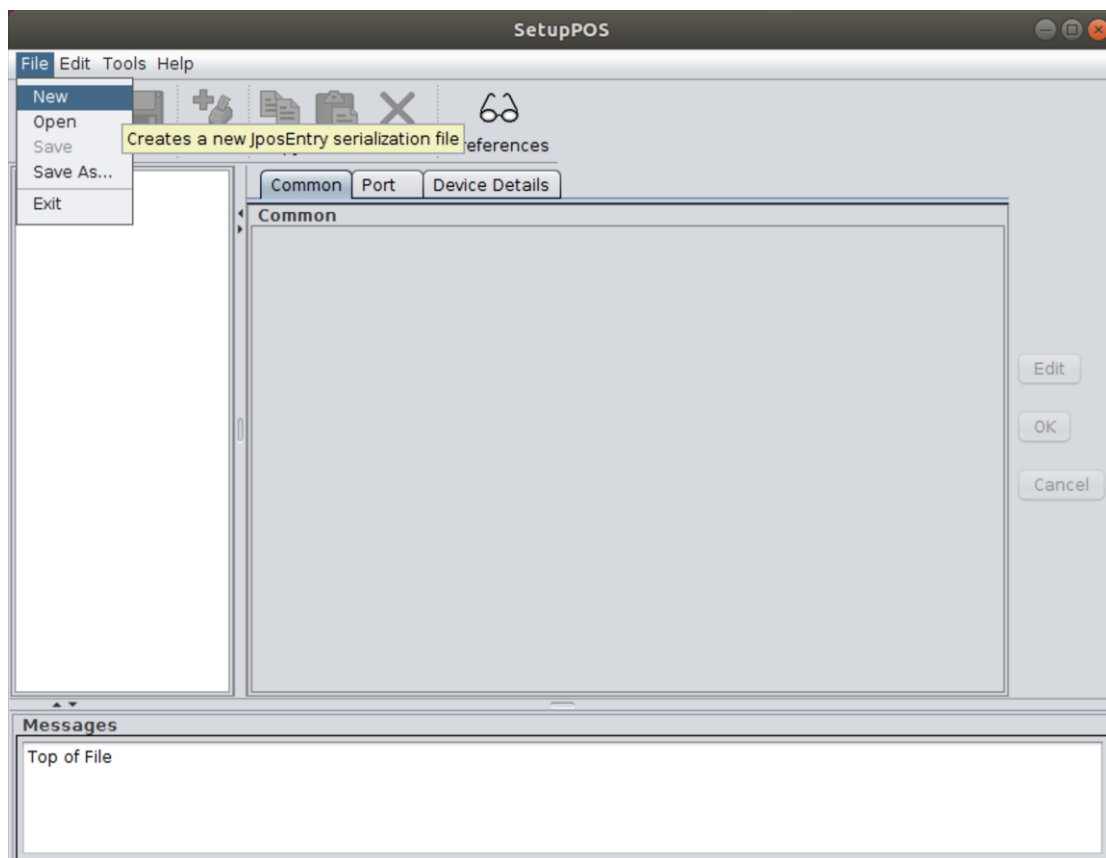
Type the following at the terminal to change to you home directory:

```
cd /opt/JavaPOS_ADK_1141_for_Linux_x64
```

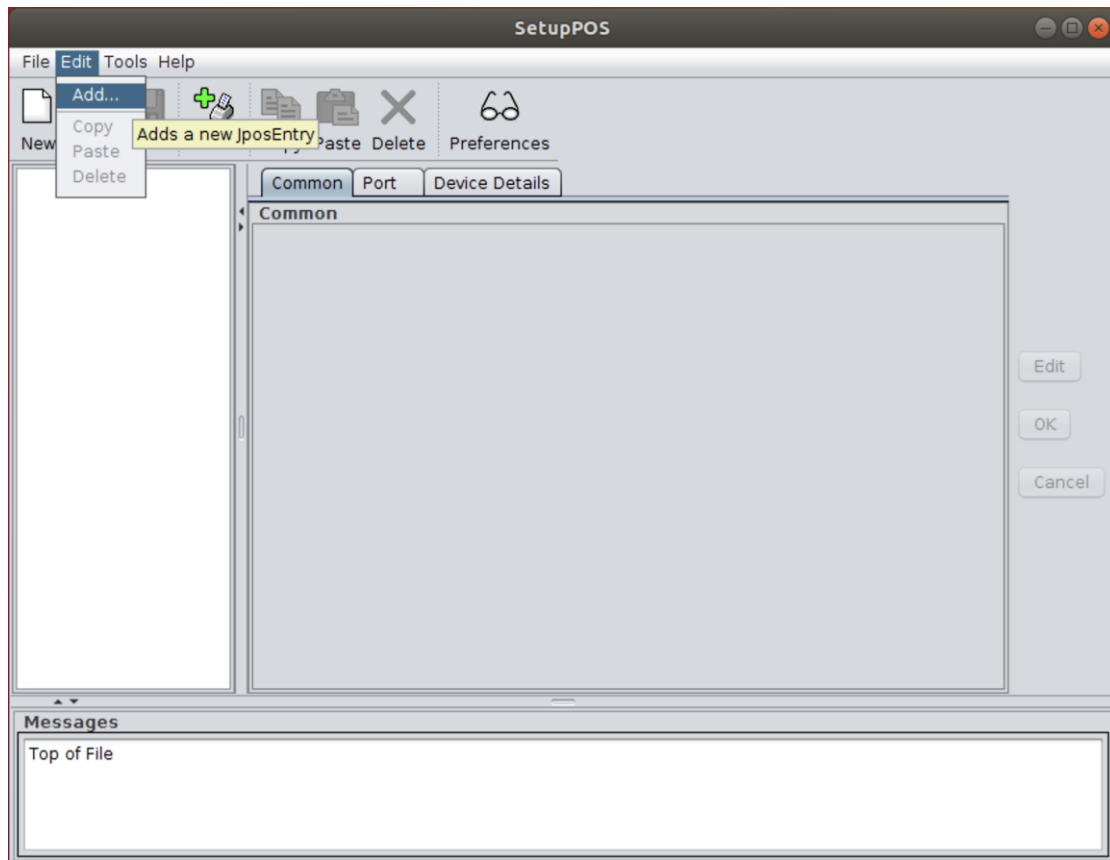
Execute the SetupPOS:

```
./SetupPOS.sh
```

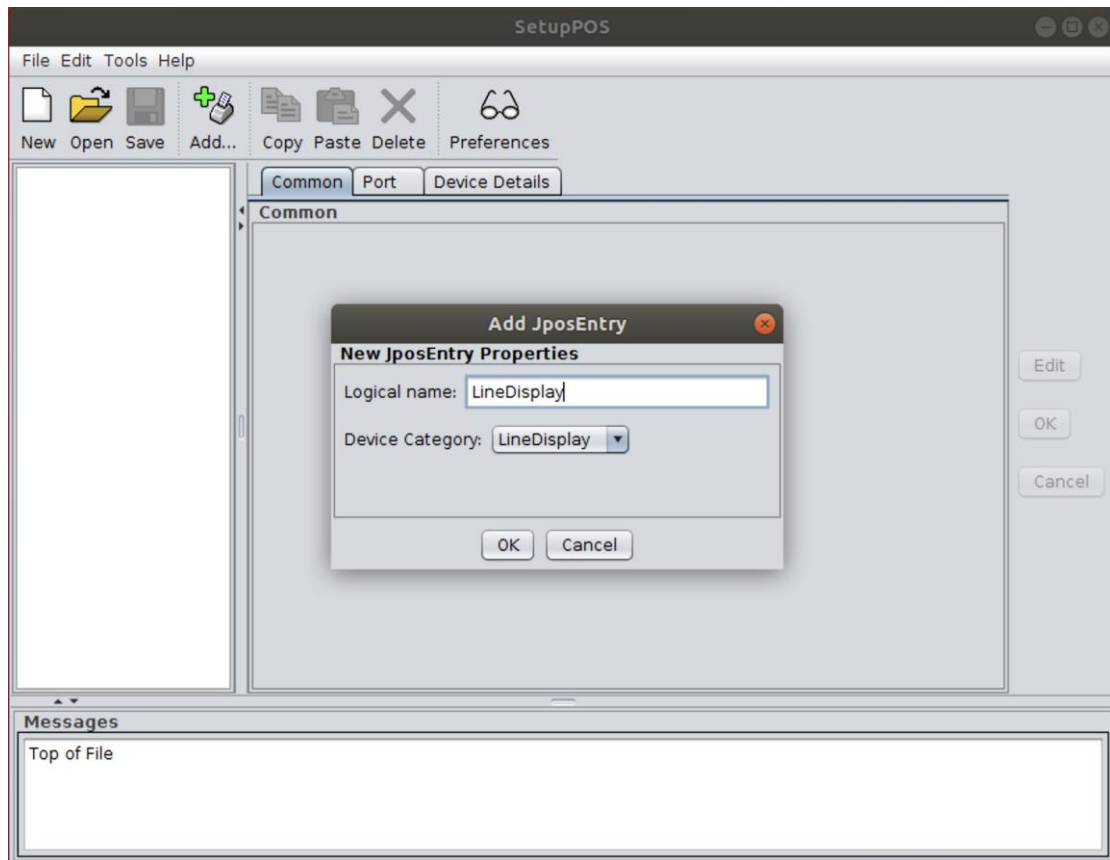
Step 1: File -> New



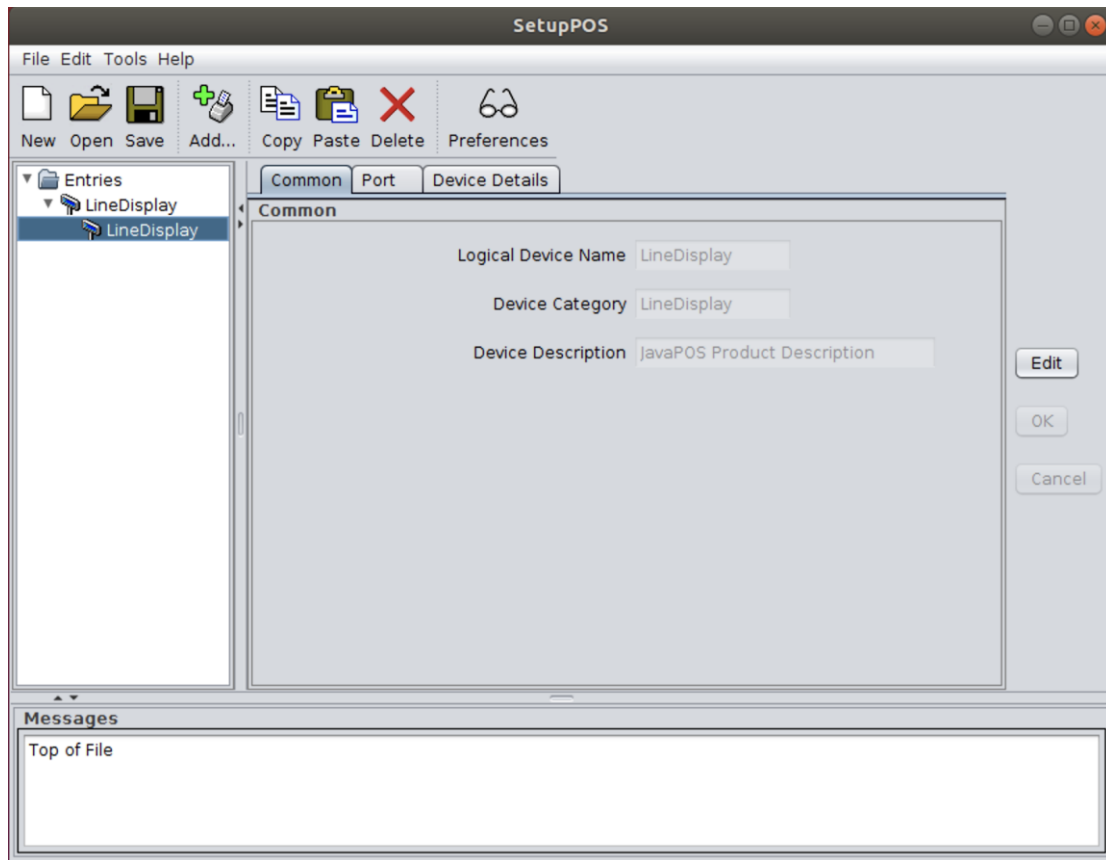
Setp 2: Edit -> Add



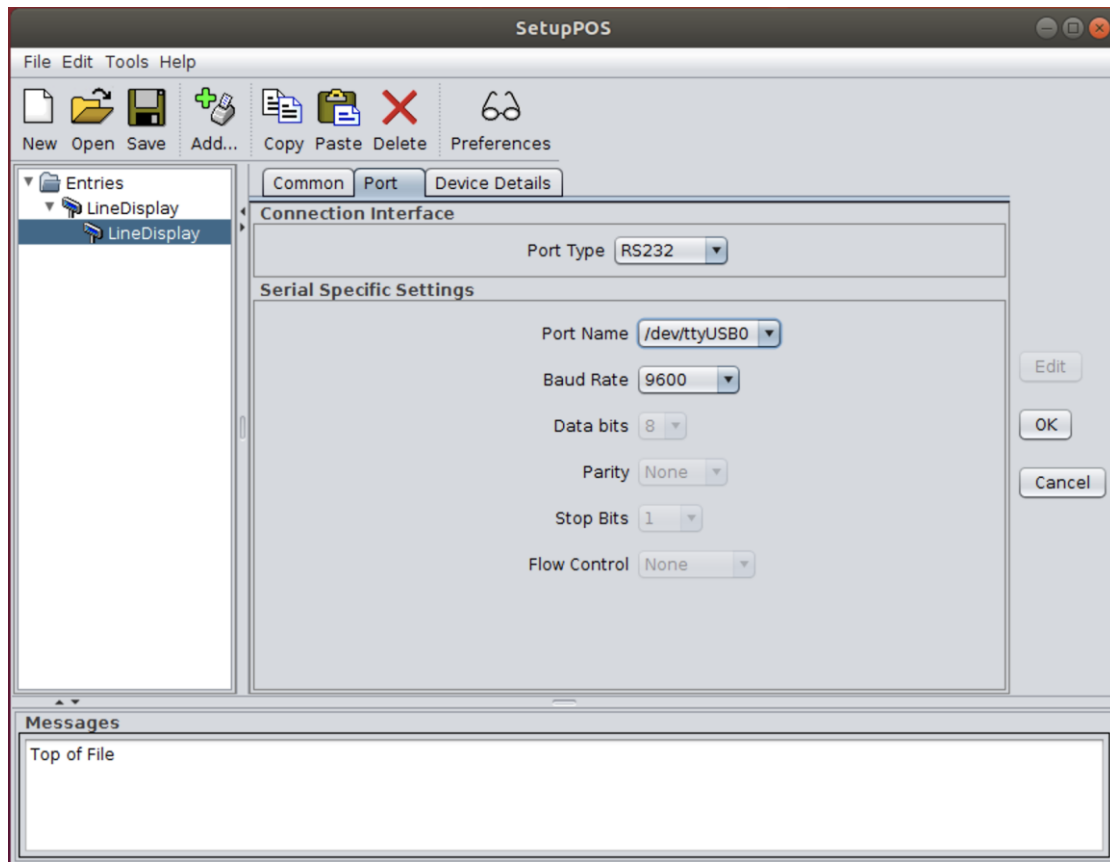
Step 3: select “Device Category” -> “LineDisplay” -> “OK”



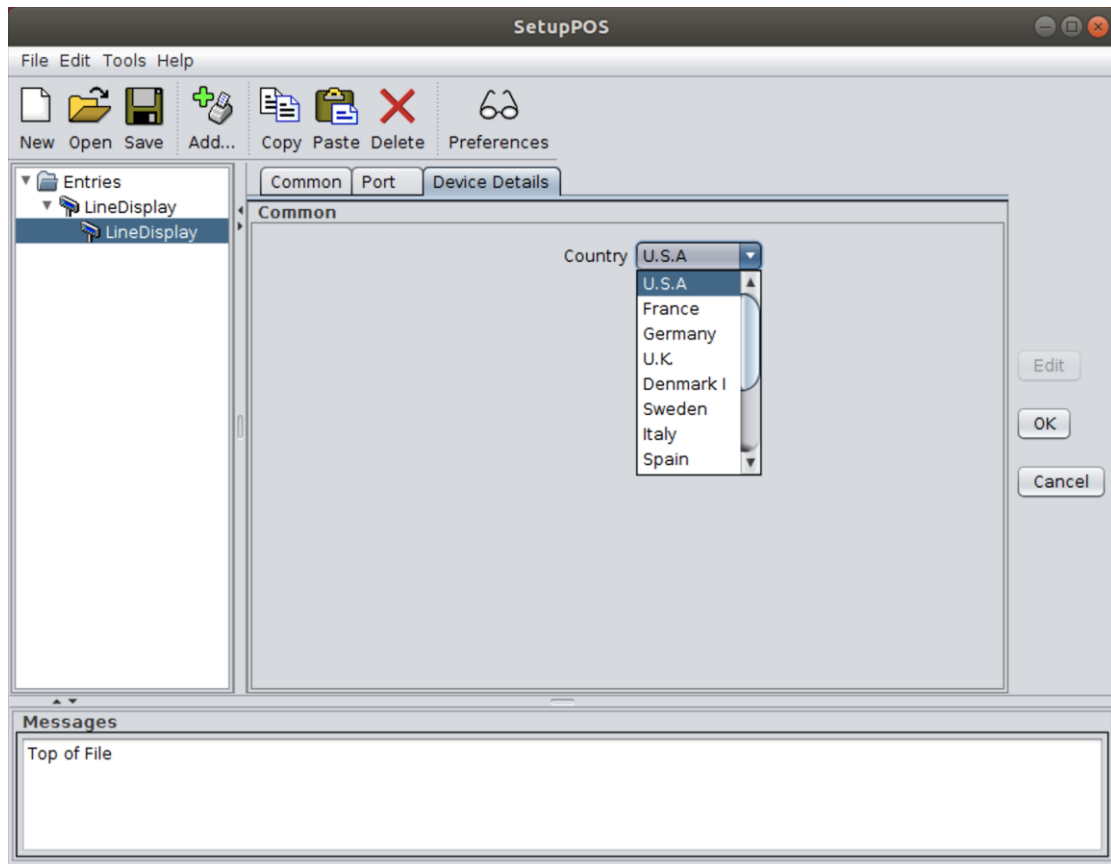
Step 4: Modify common information: “Edit” -> “OK”



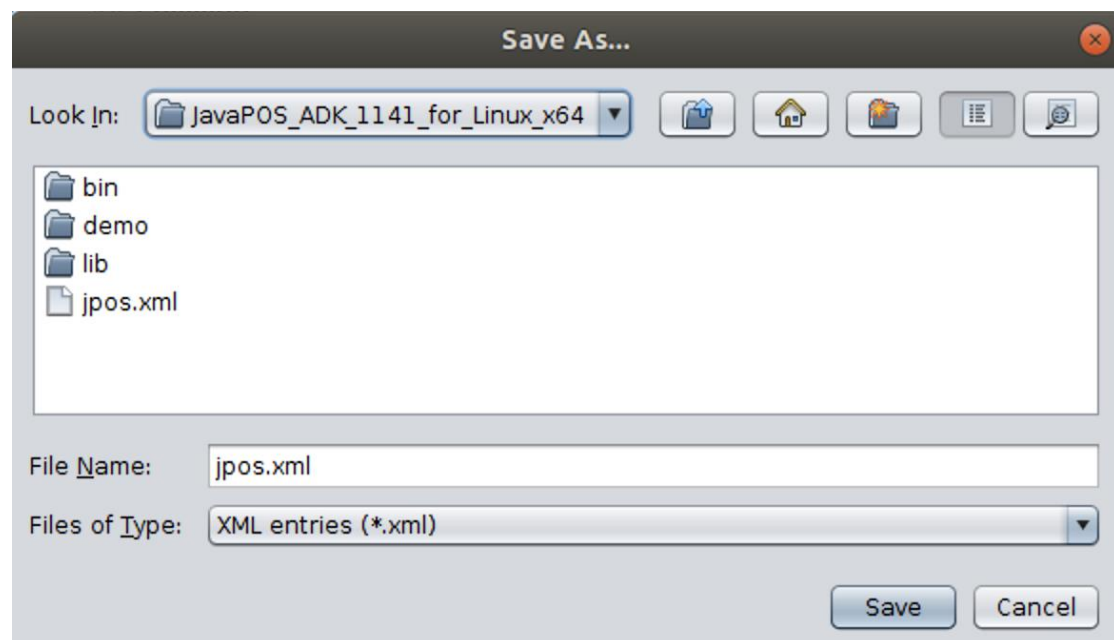
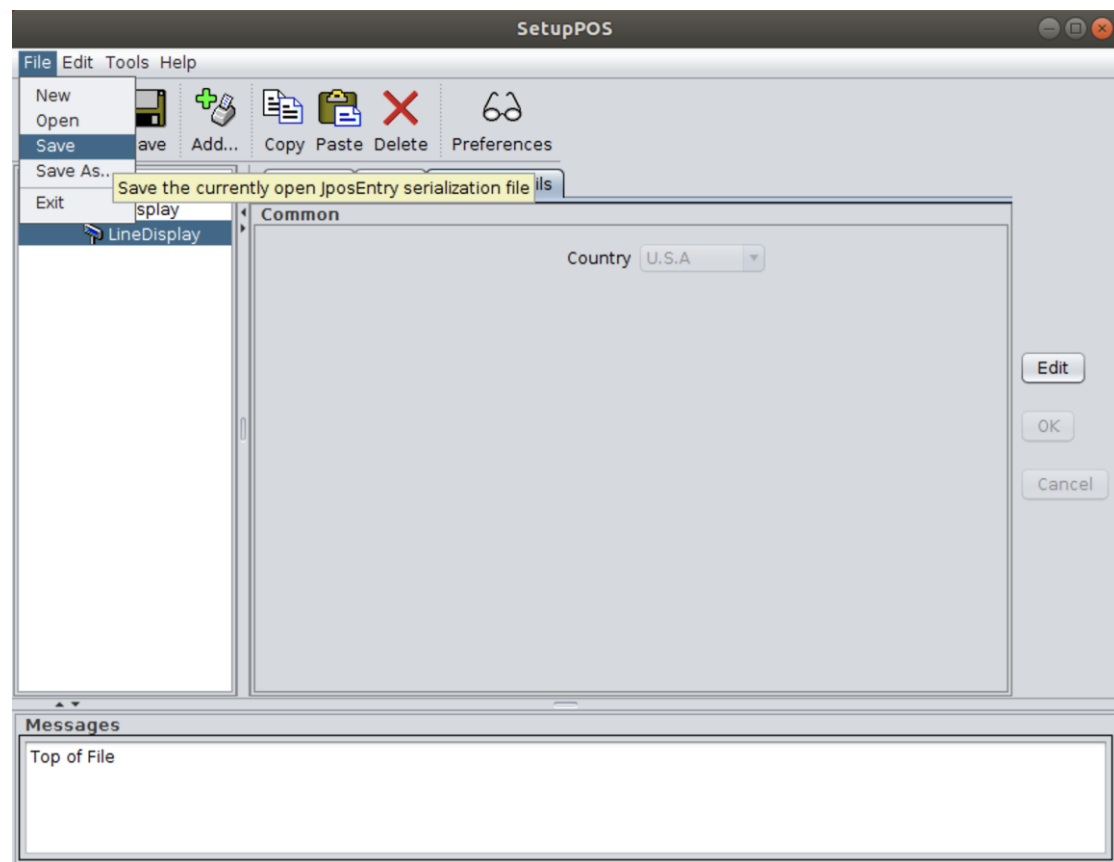
Step 5: Modify port information



Step 6: Modify country



Step 7: Save the setup file



Note: Must be saved to the current directory, filename "jpos.xml"

Step 8: CheckHealth

Execute the CheckHealth:

`./ CheckHealth.sh`

